



**INSTALLATION GUIDE**

**CTS TURBO HEAT EXCHANGER**

**F30 BMW B58 340**



**20630 Mufford Crescent, Unit #309**  
**Langley, British Columbia V2Y 2V9**

**[www.CTSTURBO.com](http://www.CTSTURBO.com)**

**WHAT IS INCLUDED**

1. CTS heat exchanger
2. Adhesive foam tape
3. Installation hardware

**Other requirements:**

1. Before Installing make sure you have new coolant to refill the system.
2. Battery Charger recommended.

**NOTES**

Vehicle used in this guide is a 2016 BMW 340i. Always make sure the car is safe to work on. Do not work on a hot motor. We do not accept any liability for incorrect installation or damage during the install.

**STEP 1**

Remove the inner wheel well trim on both sides of the vehicle. There are 9 bolts you need to remove.



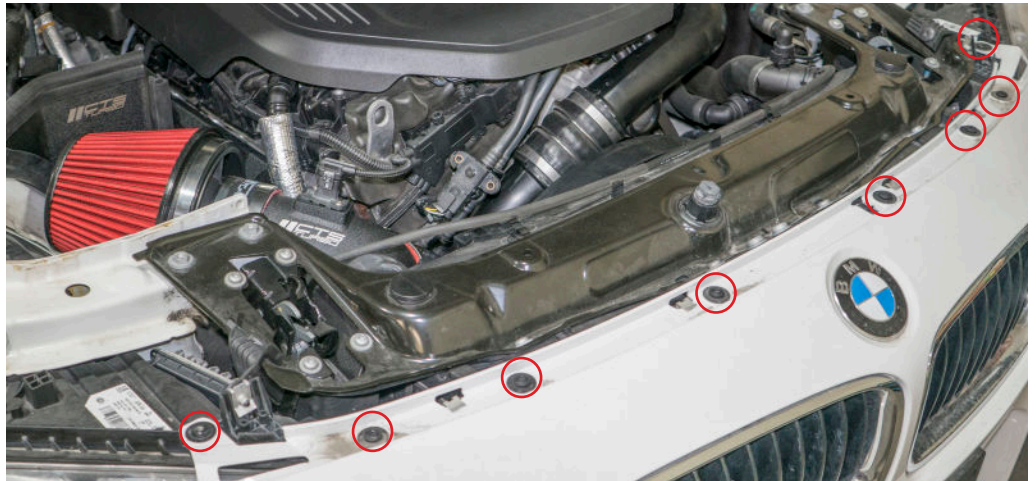


**STEP 2**

On both sides there are two connectors that need to be disconnected.

**STEP 3**

Remove the bolts and screws from the top and the bottom of the bumper



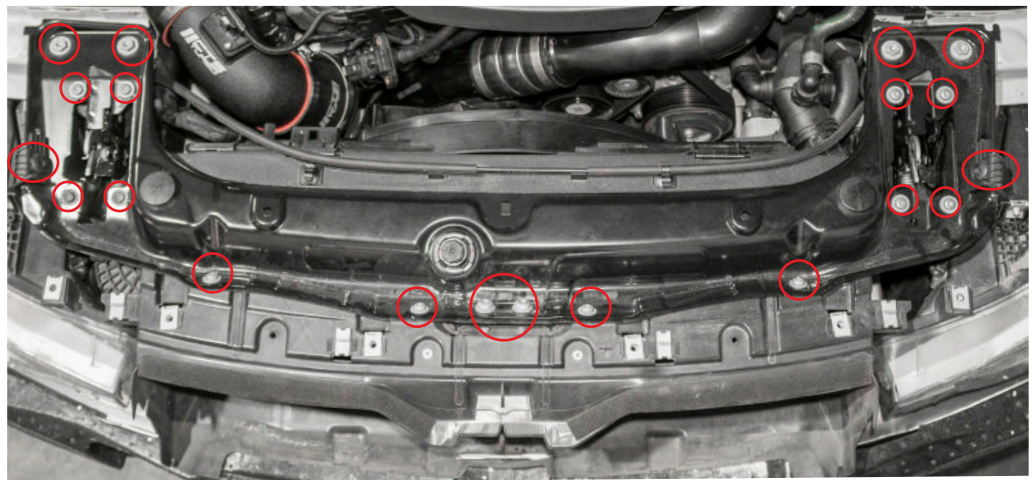


**STEP 4**

Remove the bumper.

**STEP 5**

You will need to remove the hood catches and support frame.





**STEP 6**

Remove the crash bar.

**STEP 7**

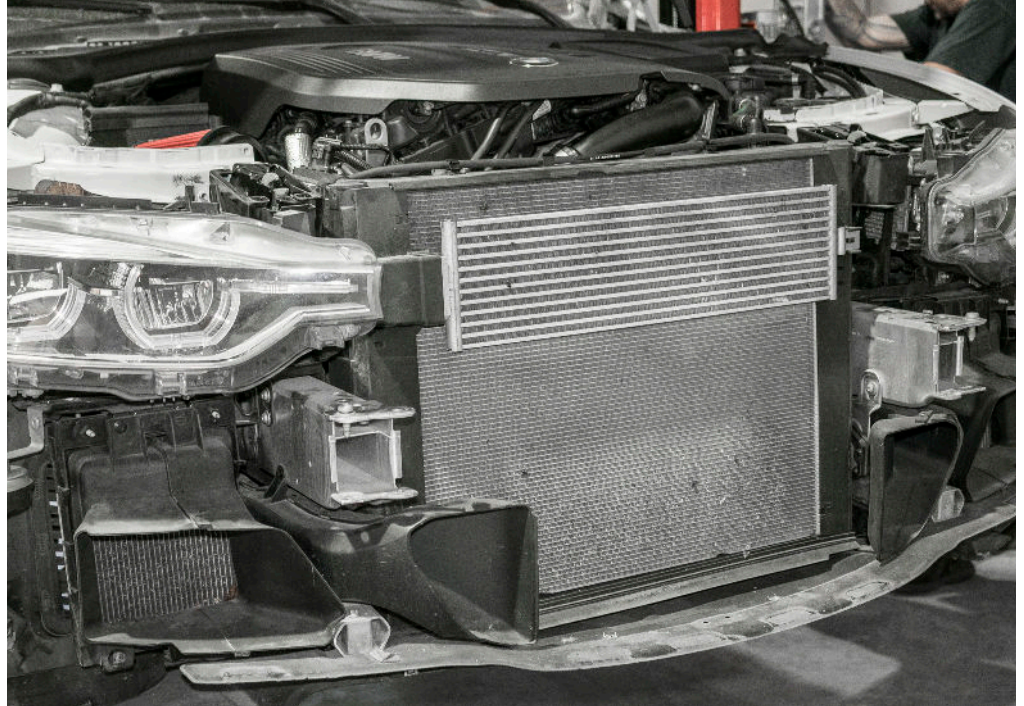
Remove the plastic air scoop.





**STEP 8**

Remove the support brace.

**STEP 9**

There is a plastic cover over top of the radiator and heat exchanger on both sides.

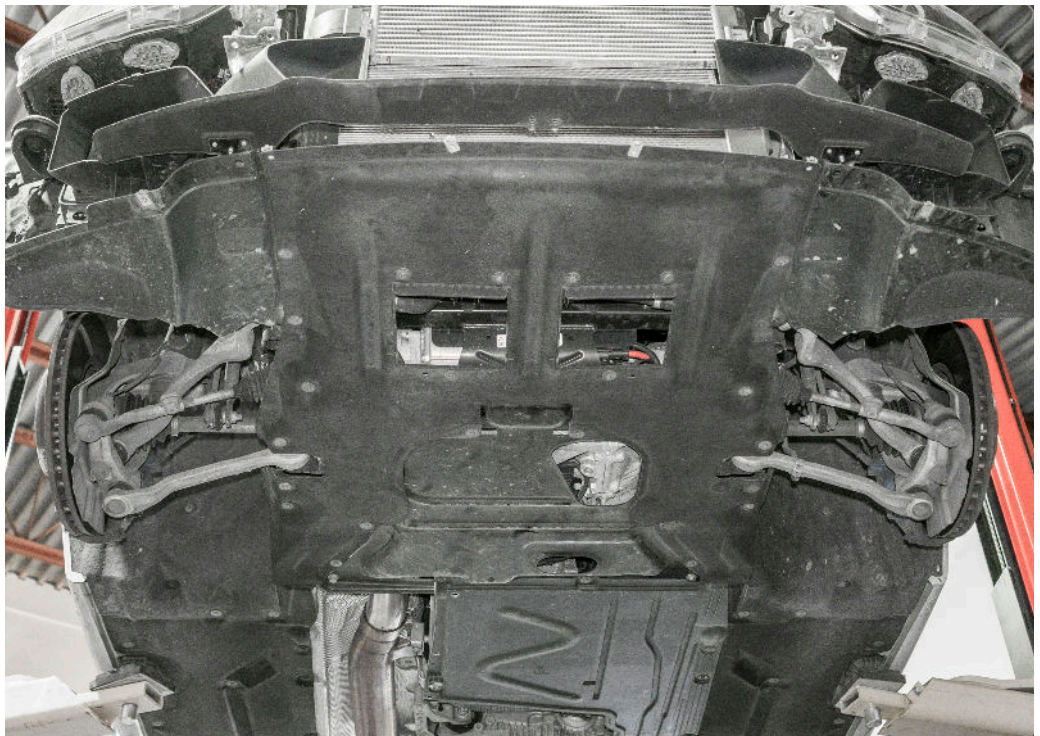
There is one screw to be removed on each side





**STEP 10 CONT.****STEP 11**

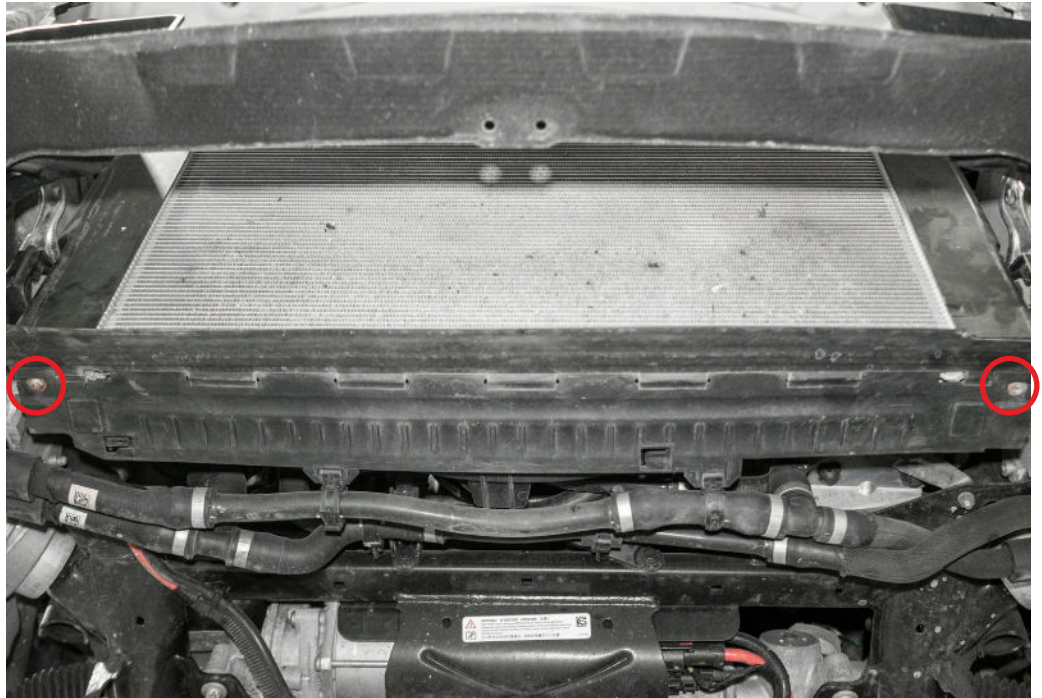
Remove the under-tray.





**STEP 12**

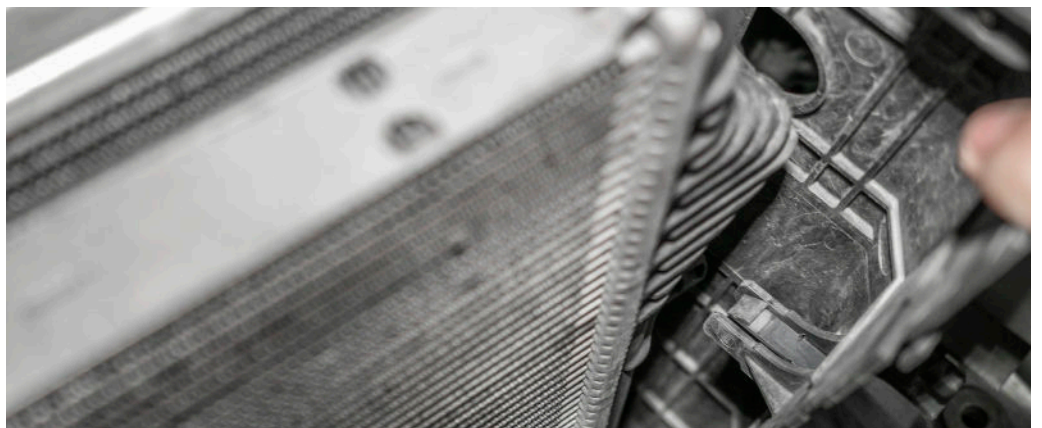
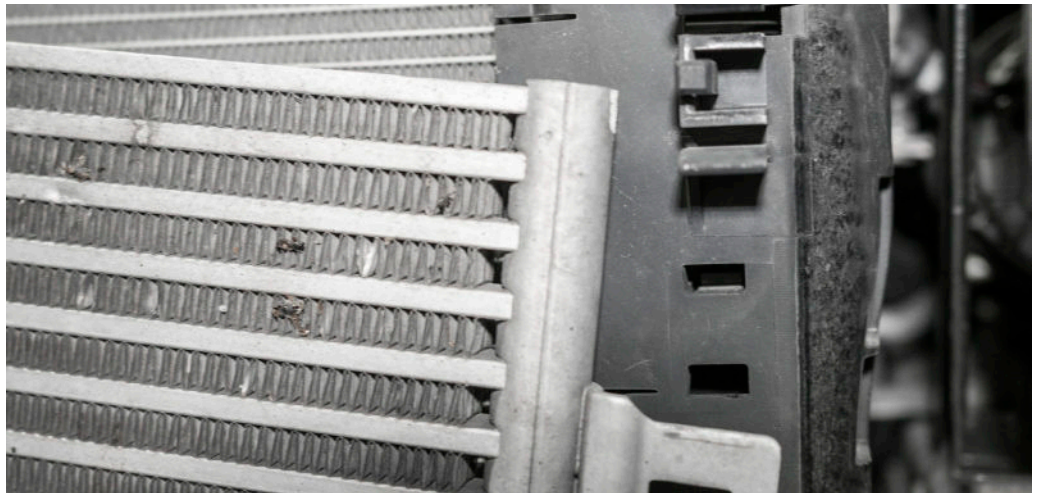
Remove the two indicated screws.

**STEP 13**

Detach the auxiliary cooler.

Remove the plastic trim on both sides.

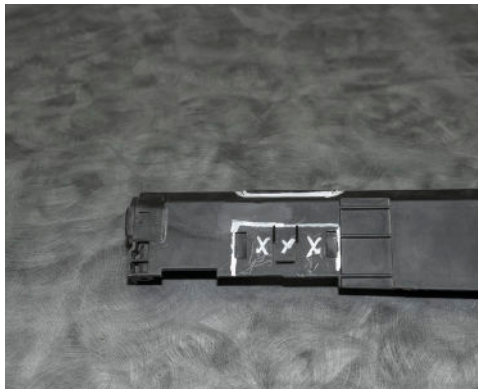
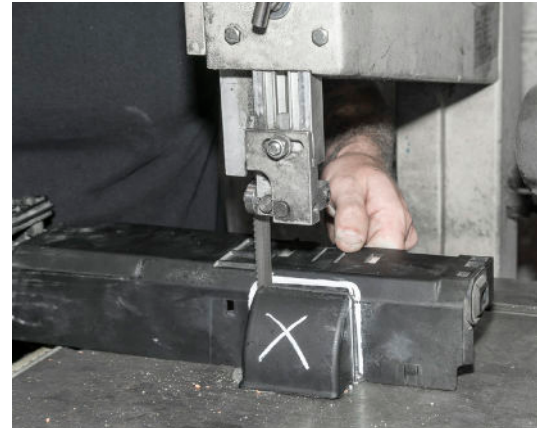
We suggest clamping the hose lines and removing the heat exchanger now.





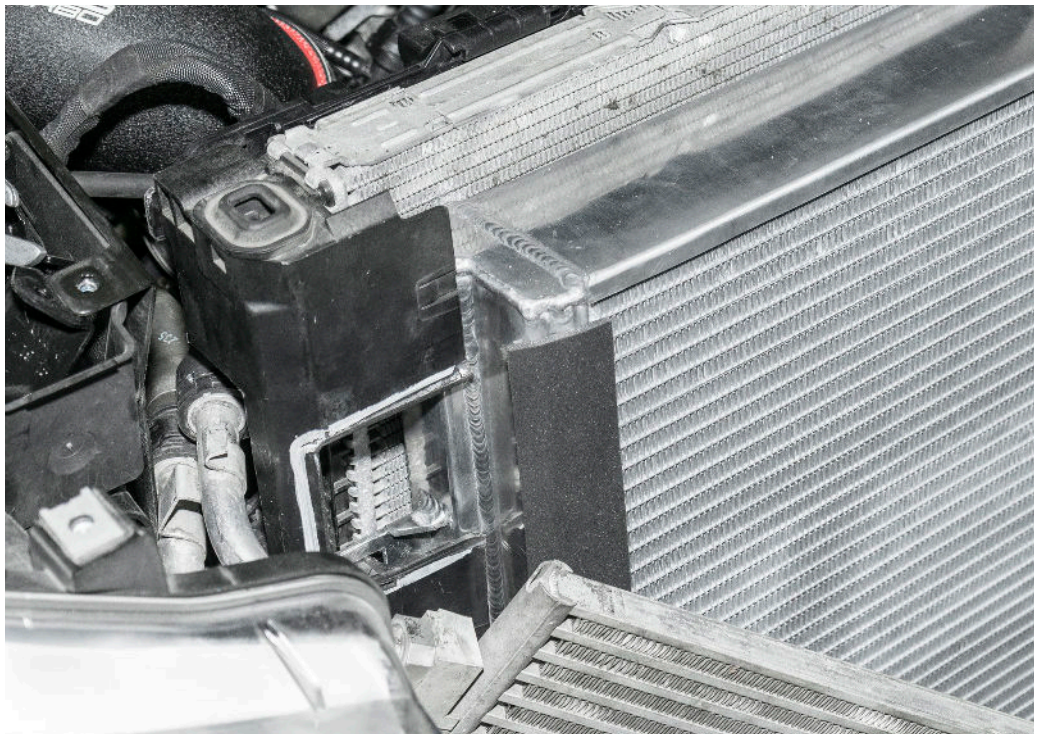
**STEP 14**

We need to do some trimming on the plastic side covers.

**STEP 15**

Install the CTS heat exchanger and the trimmed side covers.

Use the provided foam strip to attach to the heat exchanger. This is for protection of rubbing against the auxiliary cooler.





**STEP 16**

Install the provided bracket to mount the auxiliary cooler.





**STEP 17**

You need to refill coolant from the reservoir.

At this point we need to bleed the system. You may need to do this 2 or 3 times to make sure all the air is out of the system.

1. Connect the battery charger if you have one.

2. Turn the ignition on but don't start the car.

3. Turn your lights on to low beam.

4. Turn the climate control heat up to maximum and the fan on the lowest setting.

5. Next you hold down the accelerator for 6-10 seconds, you will hear the water pump turn on.

The process lasts around 11 minutes.





**STEP 18**

To reassemble work your way back from step 11 and you are done!

