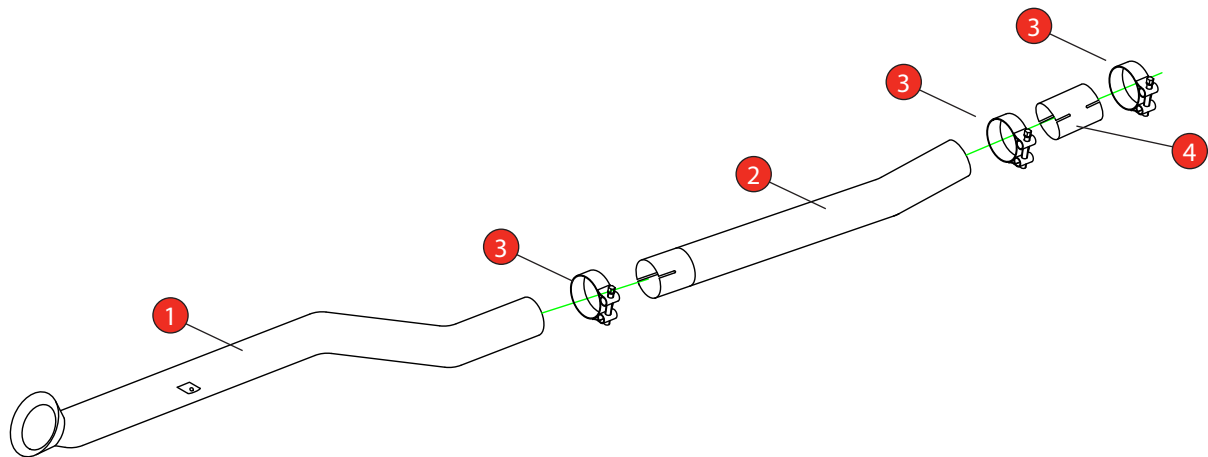


| | | | |
|--------------|--|--|----------------------|
| Car | BMW 220i G42, GPF Models only | | SBMP092 |
| Year | 2022 -Current | | 407FK |
| Notes | Where not supplied use original fittings. Original system requires cutting. | | Pipe Diameter:- 76mm |

Estimated Fitting Time: 1 Hour



| NO. | PART NO. | DESCRIPTION | QTY |
|----------------|------------|--|-----|
| 1 | 868BM | GPF Delete front pipe | 1 |
| 2 | 869BM | GPF Delete centre pipe | 1 |
| Fit Kit | | | |
| 3 | Z016.10062 | 79mm H/D Clamp | 3 |
| 4 | AD133 | Adaptor sleeve (Only required when fitting with OE GPF-back exhaust) | 1 |

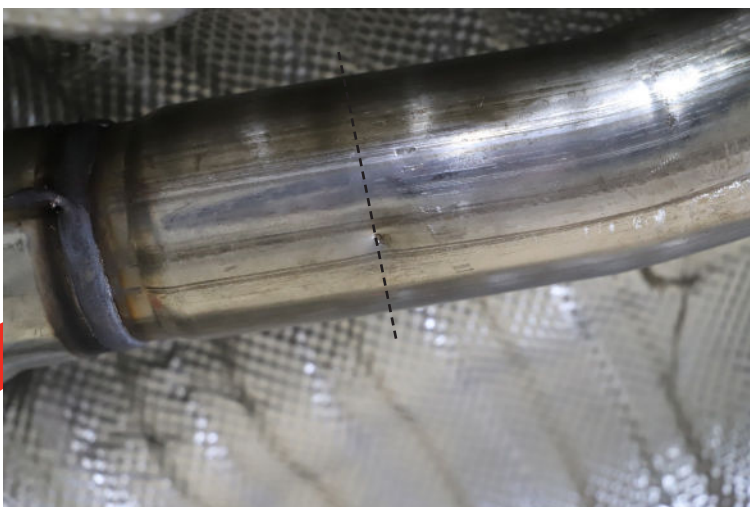
| | |
|----------------|---------------------|
| CLASSIFICATION | Motorsport Use Only |
| HOMOLOGATED | No |
| DATE | 12/06/2024 |
| ISSUE | 01 |
| AUTHORISED | G. O'Shea |

NOTE: ENSURE SCORPION SYSTEM IS CLEAR OF MOVING PARTS AND ALL ORIGINAL FUNCTIONS WORK CORRECTLY.

| | | | |
|--------------|--|--|----------------------|
| Car | BMW 220i G42, GPF Models only | | SBMP092 |
| Year | 2022 -Current | | 407FK |
| Notes | Where not supplied use original fittings. Original system requires cutting. | | Pipe Diameter:- 76mm |

Estimated Fitting Time: 1 Hour

Cutting Instructions :



To make it easier to cut the exhaust we recommend removing it from the car. Find the indent just before the resonator to mark out the cutting line. Cut along the line and de-bur the edges. If fitting with the original GPF-back re-fit this now and then fit the Scorpion GPF delete following the line diagram on the first page. If fitting with the Scorpion GPF-back you do not need to use the supplied adaptor.