



## FMTUBL21 Fitting Instructions



Please thoroughly read through and familiarise yourself with these instructions in their entirety prior to beginning any part of the installation process of any component. Please also ensure the vehicle and engine has cooled down sufficiently to avoid risking possible skin burns or other injury.

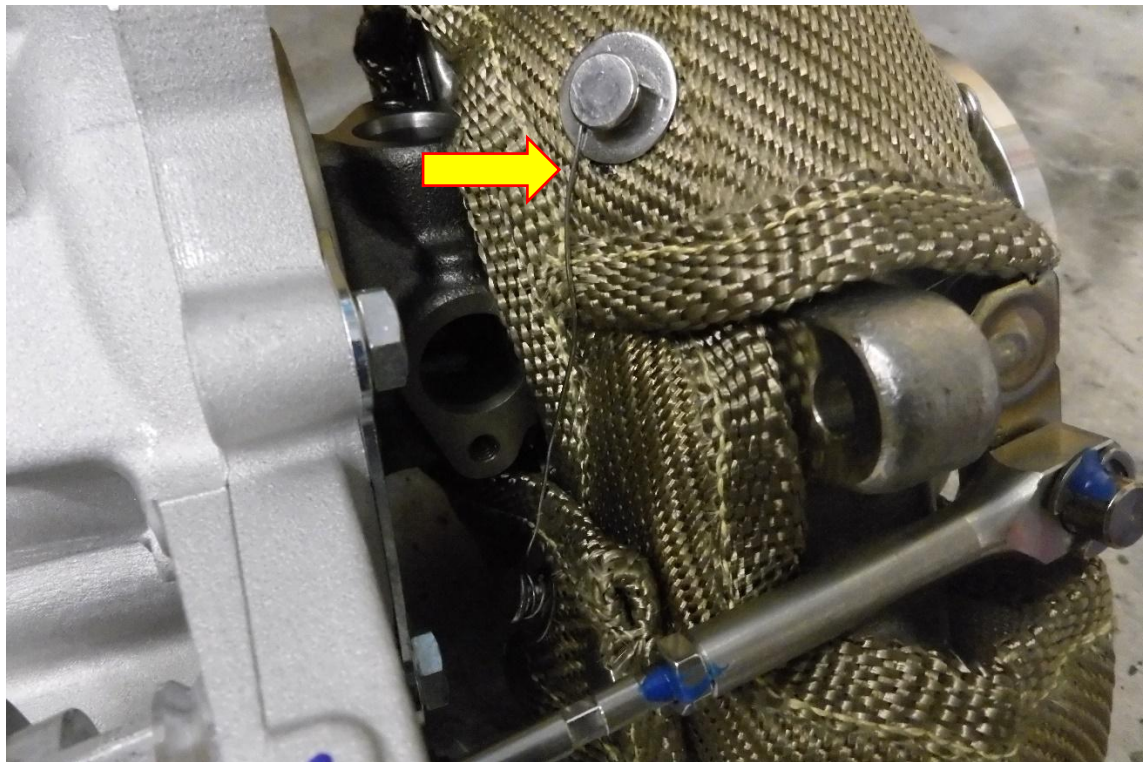
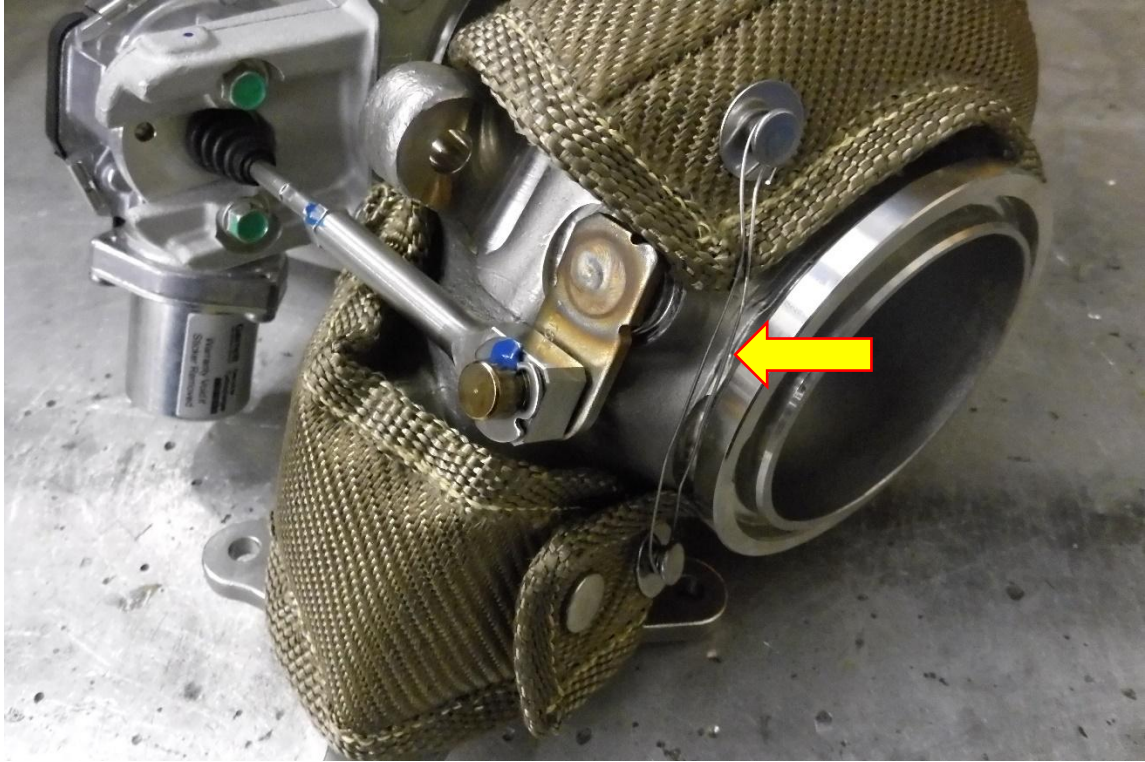
### TOOLS NEEDED:

Side cutters

1. Fit the FMTUBL21 to the Garrett turbo as shown in the pictures below.



2. Using the supplied lock wire secure the open ends of the turbo blanket, as shown in the pictures below.



3. The installation of FMTUBL21 is now complete, take your vehicle for a test drive and enjoy your new Forge Motorsport product.



**(NOTE: You may experience a burning smell for the first few heat cycles of the engine, this is normal for all our turbo blankets and will not continue once the blanket has fully cured)**

The Turbo blanket will also lose its flexibility over the first few heat cycles as the material cures, so once fitted it should **not** be routinely removed as this can cause damage to the blanket.

Check out [www.forgemotorsport.co.uk](http://www.forgemotorsport.co.uk)  
and [www.forgemotorsport.com](http://www.forgemotorsport.com)  
For a full range of performance products for your vehicle.

*If you have any questions or concerns about this product  
or anything else, please feel free to contact your local or preferred  
Forge Motorsport Dealer/Installer or you may contact us directly.*

Forge Motorsport UK (+44)1452 380999  
Forge Motorsport USA (407)-447-5363  
Forge Motorsport ASIA +886-4-22516887

[info@forgemotorsport.co.uk](mailto:info@forgemotorsport.co.uk)  
[sales@forgemotorsport.com](mailto:sales@forgemotorsport.com)  
[sales@forgemotorsport.asia](mailto:sales@forgemotorsport.asia)

