



Installation Instructions For 2014-2020 Volvo S40/V40 Drive-E

KIT CONTENTS

NO.	DESCRIPTION	QTY	
1	Intake Pipe	1	Please Check the Contents of this box immediately. Report any defective or missing parts to us or our dealer that you purchased this product from. Before installing any parts of this system, please read the instructions thoroughly. If you have any questions regarding installation please contact the our dealer or local modified car factory. Installing does require some mechanical skills. A qualified mechanic is always recommended. ※Do not attempt to install the intake system while the engine is hot. The installation may require removal of radiator fluid line that may be hot. MST Performance Auto Parts offers a limited lifetime warranty to the original purchaser against defects in materials and workmanship. Warranty claims must be handled through the dealer from which the item was purchased.
2	Heat Shield	1	
3	Heat Shield Cover	1	
4	Air Filter 89/90mm	1	
5	M4 Bolt 10mm Kit	6	
6	M8 Bolt	1	
7	M8 Nut	1	
8	M8 Washer	2	
9	M6 Bolt	1	
10	M6 Washer	1	
11	ALU Mount	1	

*All installation of parts must be performed by a trained professional.



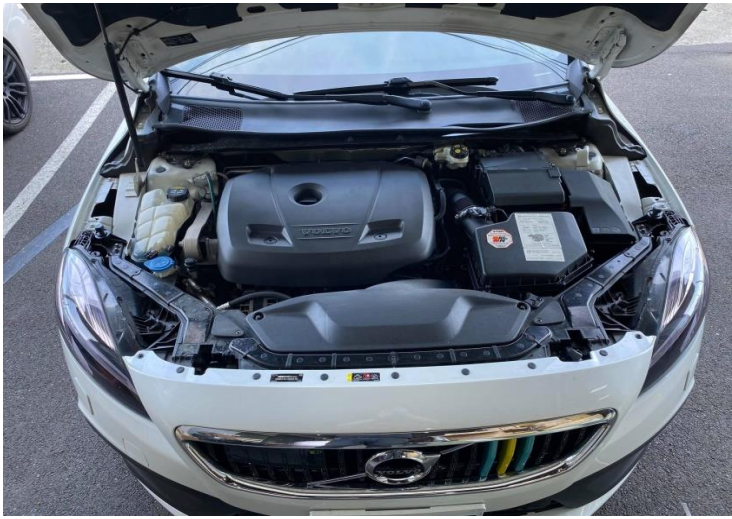


Figure 1: Stock air box.



Figure 4: Remove the stock air scoop cover bolts.



Figure 2: Disconnect the MAF sensor.



Figure 5: Remove the stock air scoop cover.



Figure 3: Loosen the hose clamp.



Figure 6: Remove the stock air box.



Figure 7: Remove the air scoop from the stock air box.



Figure 10: Install the MST heat shield.



Figure 8: Remove the MAF sensor from the stock air box.

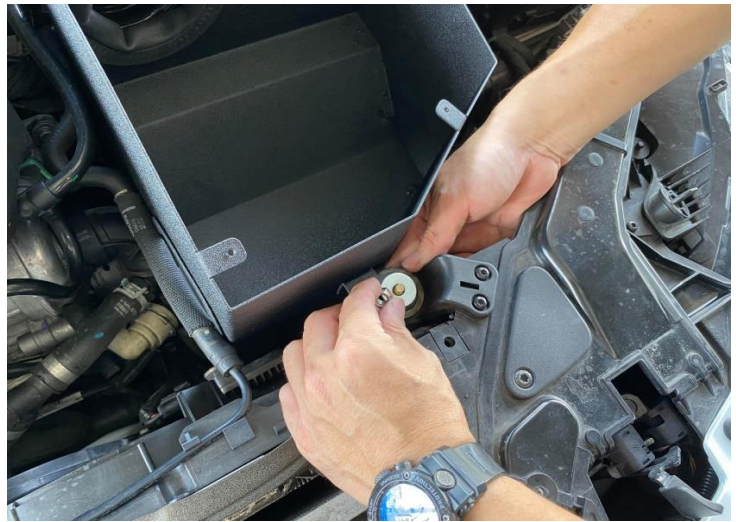


Figure 11: Tighten the M8 bolt.



Figure 9: Install the ALU mount.



Figure 12: Install the MAF sensor on the MST pipe.



Figure 13: Connect the inlet pipes and tighten the hose clamp.



Figure 16: Reinstall the stock air scoop.



Figure 14: Connect the MAF wire.



Figure 16: Reinstall the stock air scoop cover.



Figure 15: Install the MST filter.



Figure 18: Install the heat shield cover.



Figure 19: Congratulations! You have just completed the installation of this intake system. Periodically, check the alignment of the intake, normal wear and tear can cause nuts and bolts to come loose.