



FMINDK48 Fitting Instructions



Please thoroughly read through and familiarise yourself with these instructions in their entirety prior to beginning any part of the installation process of any component. Please also ensure the vehicle and engine has cooled down sufficiently to avoid risking possible skin burns or other injury.

TOOLS NEEDED:

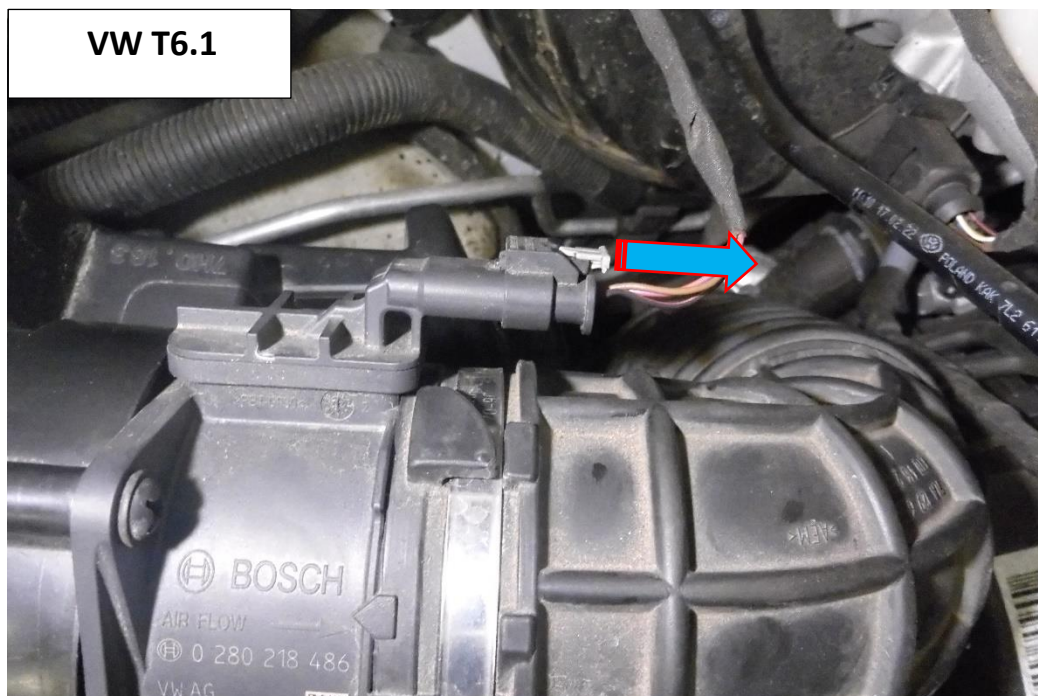
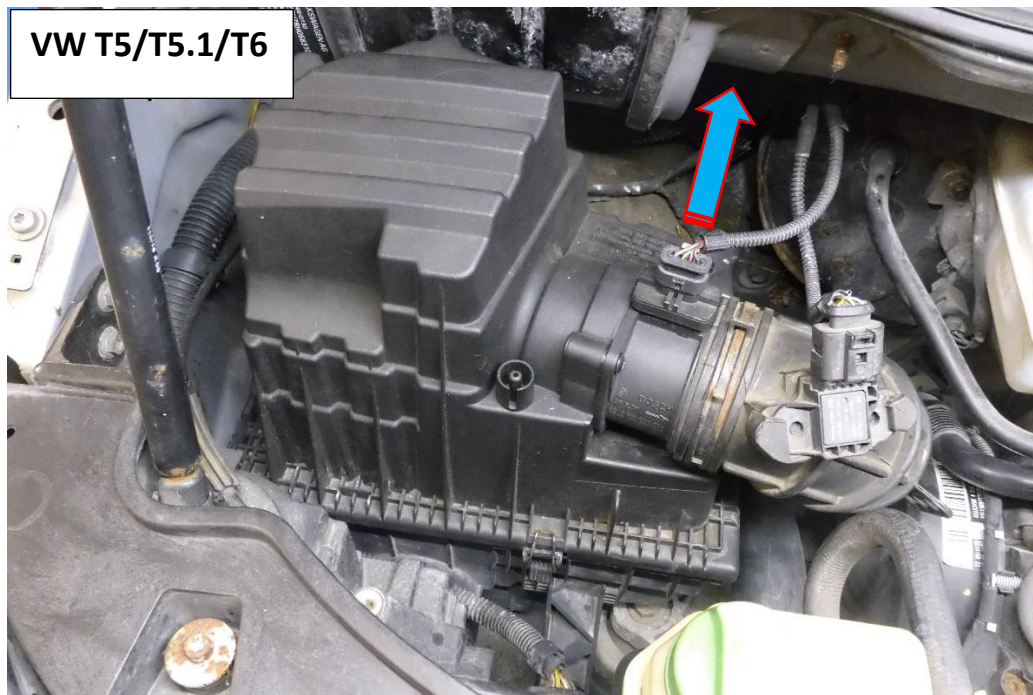
7mm Socket and Ratchet and suitable extension

T20 Torx Drive

5mm Allen key

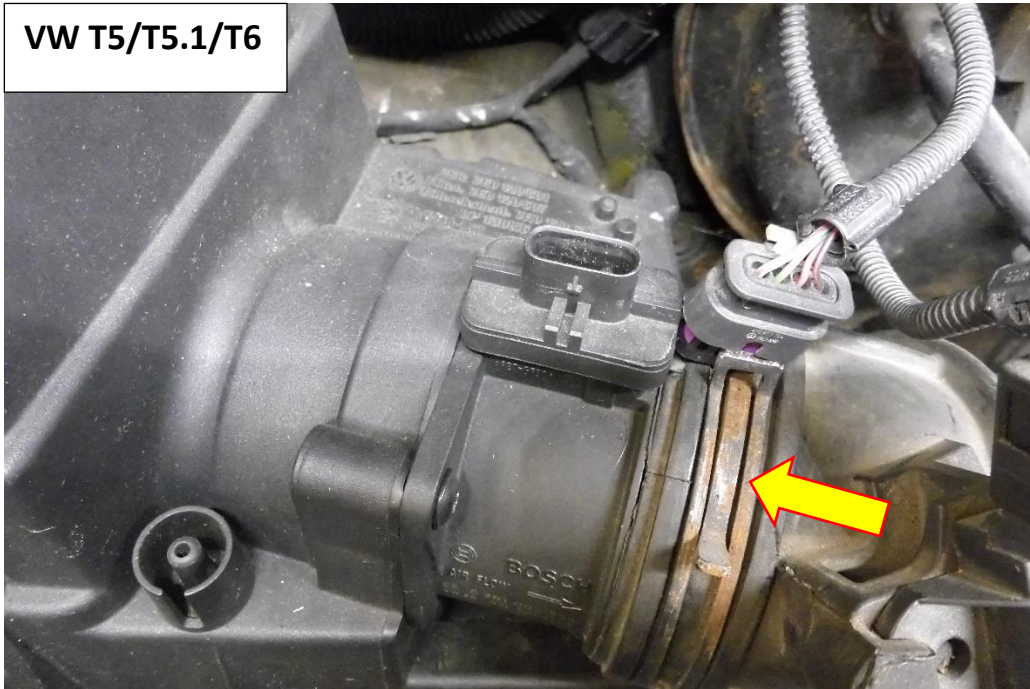
Long nose pliers/hose clamp removal tool

1. Open the bonnet and locate the OE air filter box, and un plug the MAF sensor.

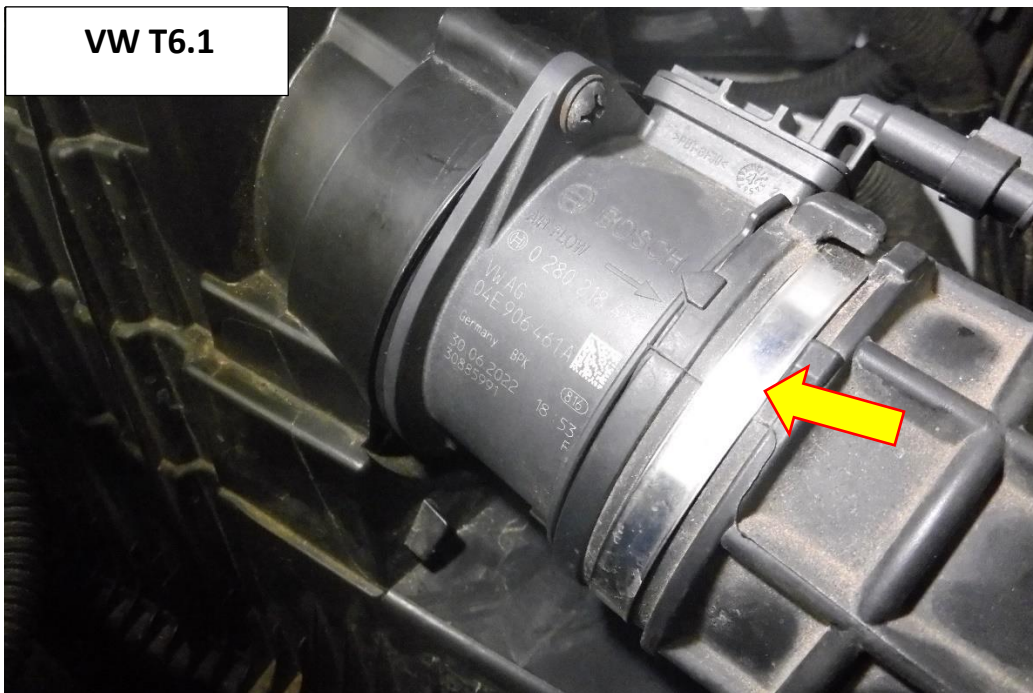


2. Using a hose clamp removal tool or long nose pliers loosen the hose clamp securing the inlet hose and remove the hose from the MAF sensor.

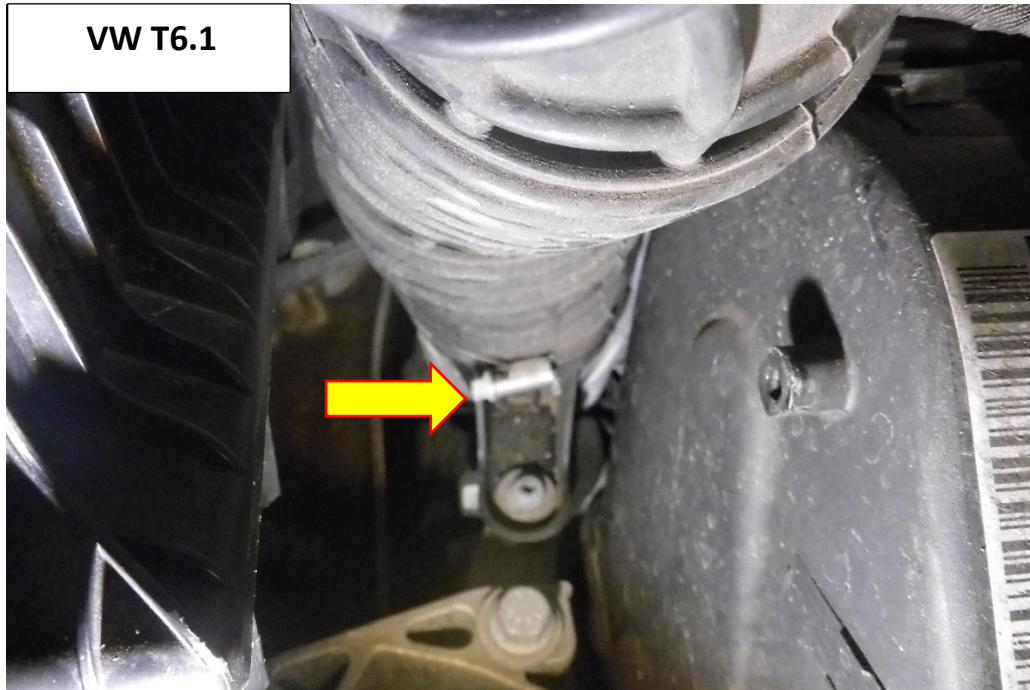
VW T5/T5.1/T6



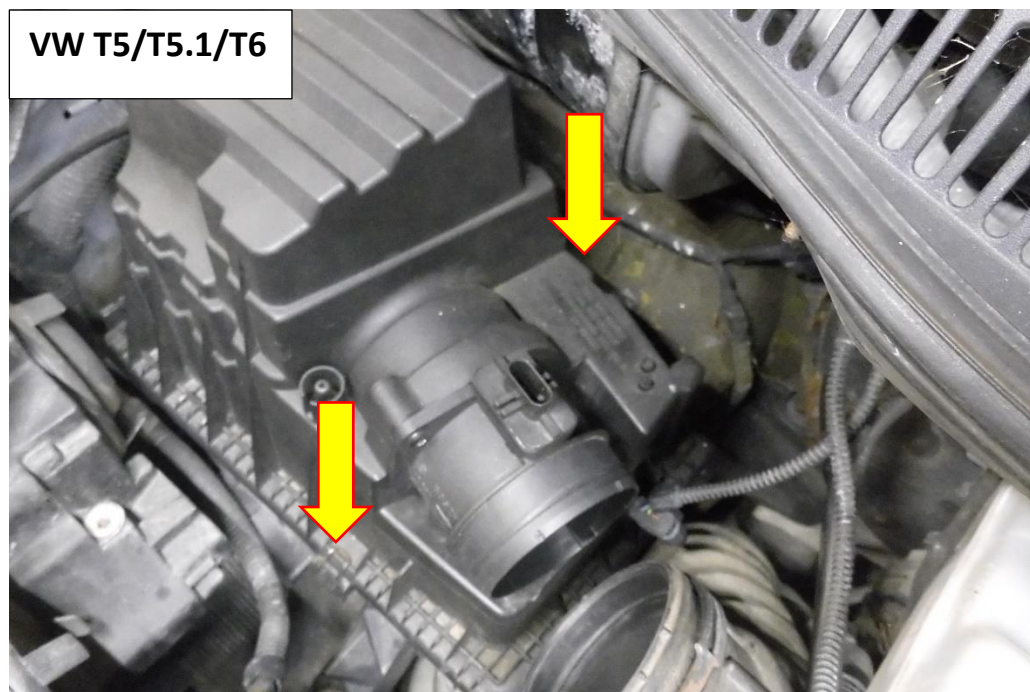
VW T6.1

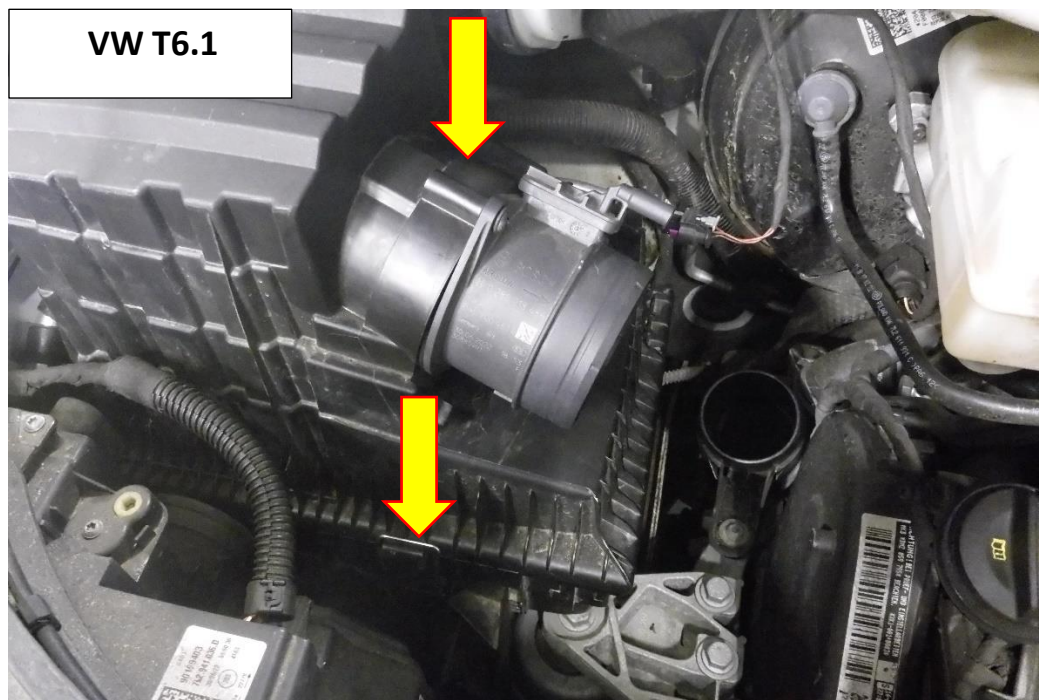


On the T6.1 models using a 7mm socket and ratchet loosen the hose clamp attaching the other end of the inlet hose, to allow removal of the hose from the engine bay.



3. Unclip the retaining fasteners on both sides of the airbox lid and remove it from the engine bay.

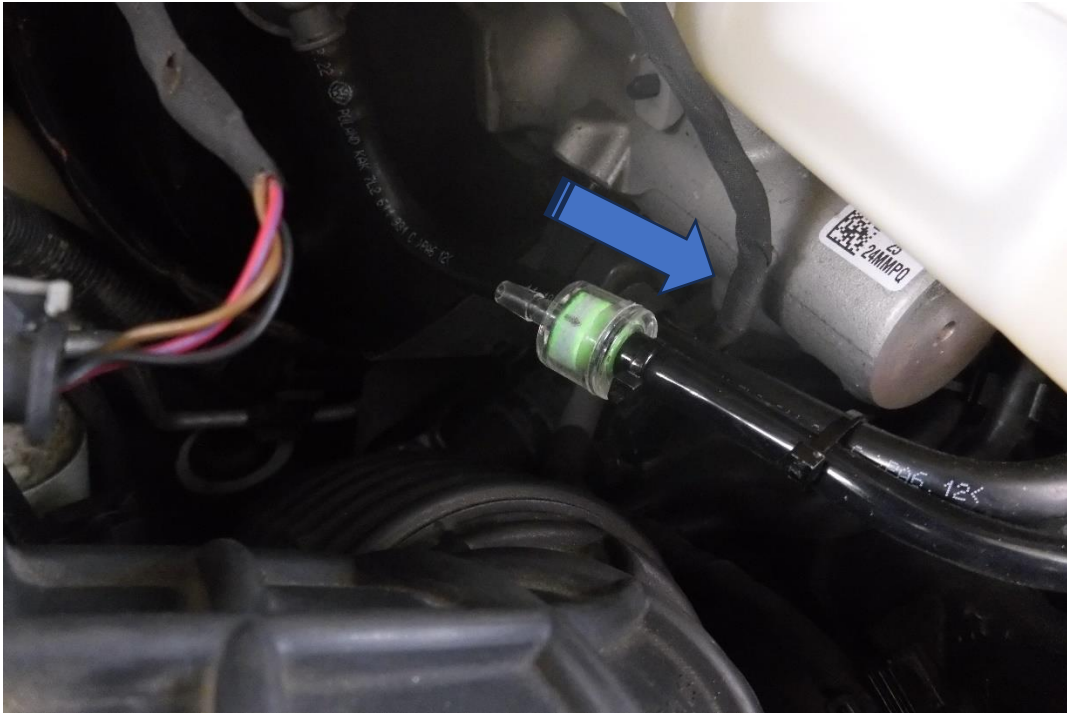




4. If you have a 2.0TSI you will need to remove the vacuum hose attached to the airbox lid and fit the supplied 4mm filter from the FMINDK48 kit use the supplied cable ties to secure it into place.



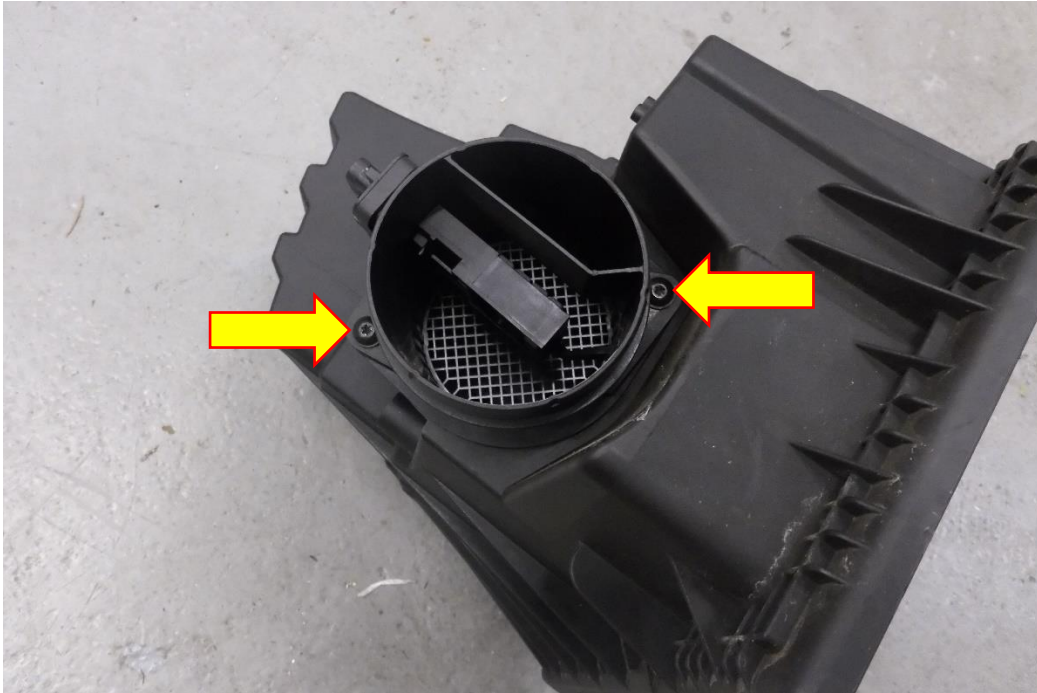
IMPORTANT: Make sure the arrow on the filter is fitted as shown in the picture below.



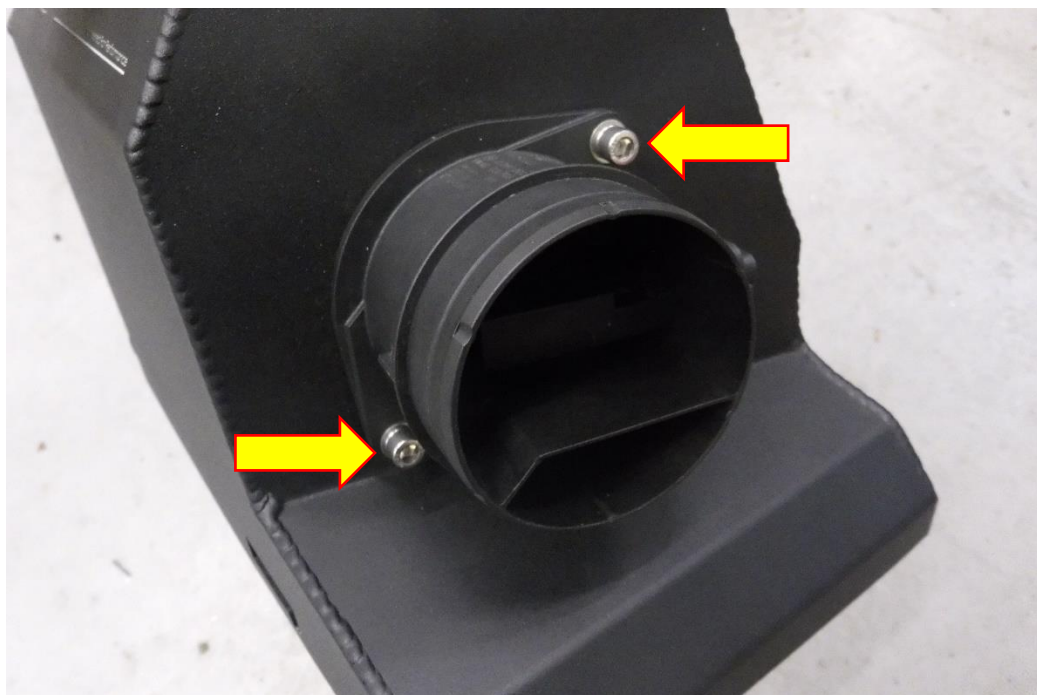
5. Remove the OE panel filter form the OE airbox, this will simply pull out.



6. Using a T20 Torx drive or Pozi drive remove the X2 fasteners attaching the MAF to the airbox, now pull the MAF out from the airbox lid.



7. Using a 5mm Allen key attach the MAF to the Forge Motorsport airbox lid using the supplied M6x20 fasteners, spring washers and plain washers.



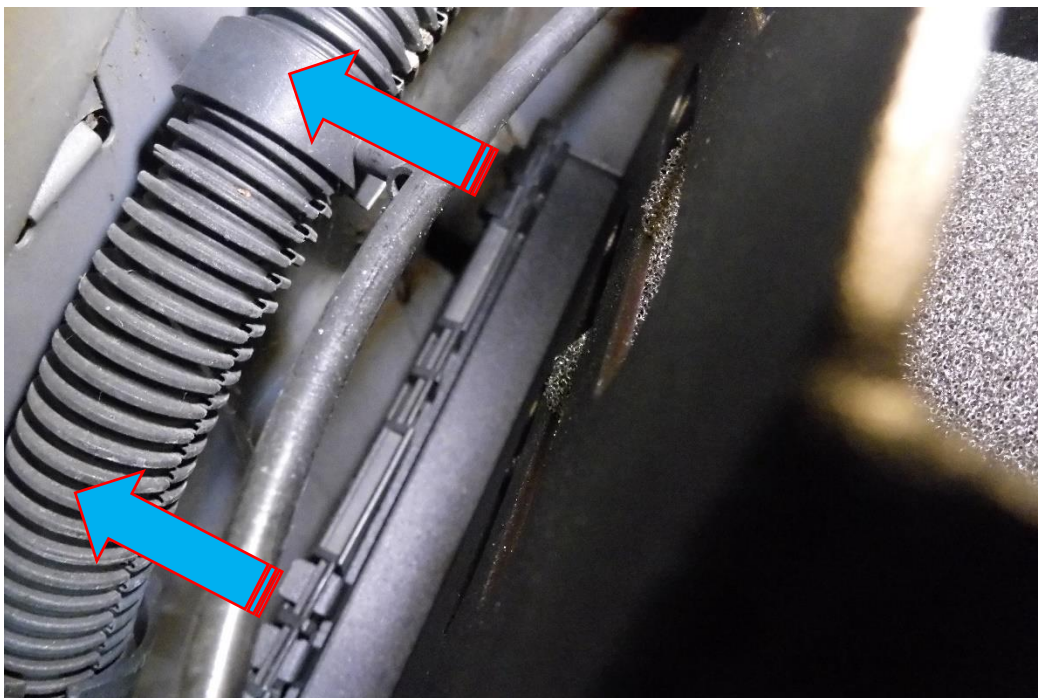
IMPORTANT: If you have a vehicle with the smaller MAF(1.9 TDI) fit the supplied silicone spacer ring to the MAF housing before fitting the air filter.



8. Fit the Forge Motorsport air filter to the MAF sensor this is achieved by angling the filter from the underside of the Forge airbox lid. Use a 7mm socket and ratchet to secure the air filter to the MAF sensor.

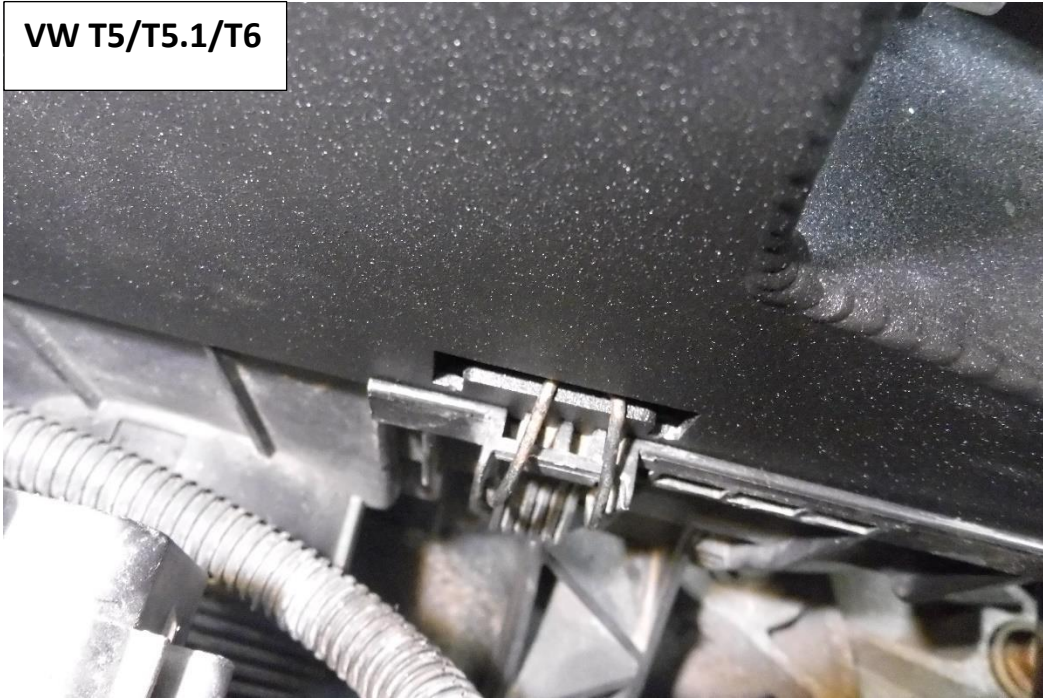


9. Fit the Forge Motorsport airbox lid to the OE airbox bottom, slide the locating fins into the same orientation as the OE airbox lid.



10. Secure the Forge airbox lid to the lower part of the OE airbox using the original retaining clips.

VW T5/T5.1/T6

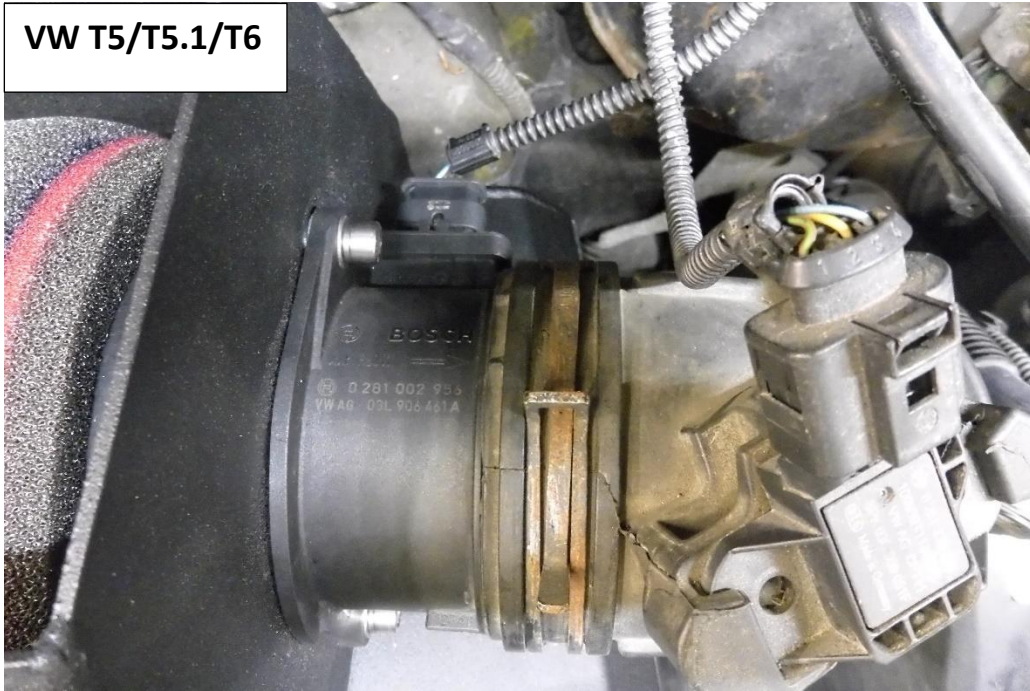


VW T6.1

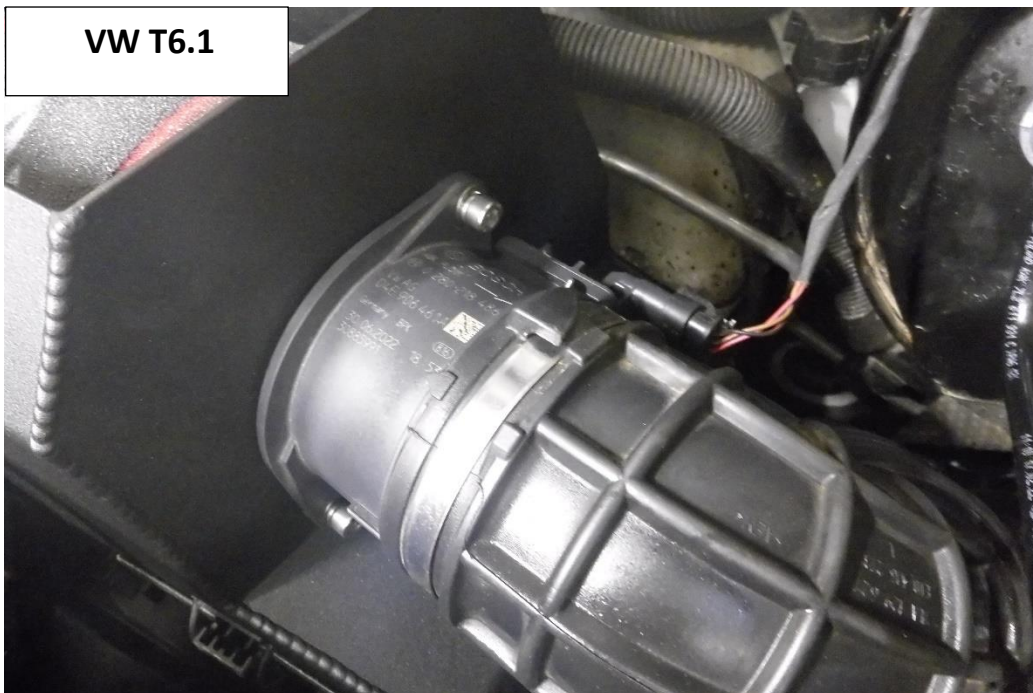


11. Reattach the MAF sensor loom and inlet hose to the MAF sensor.

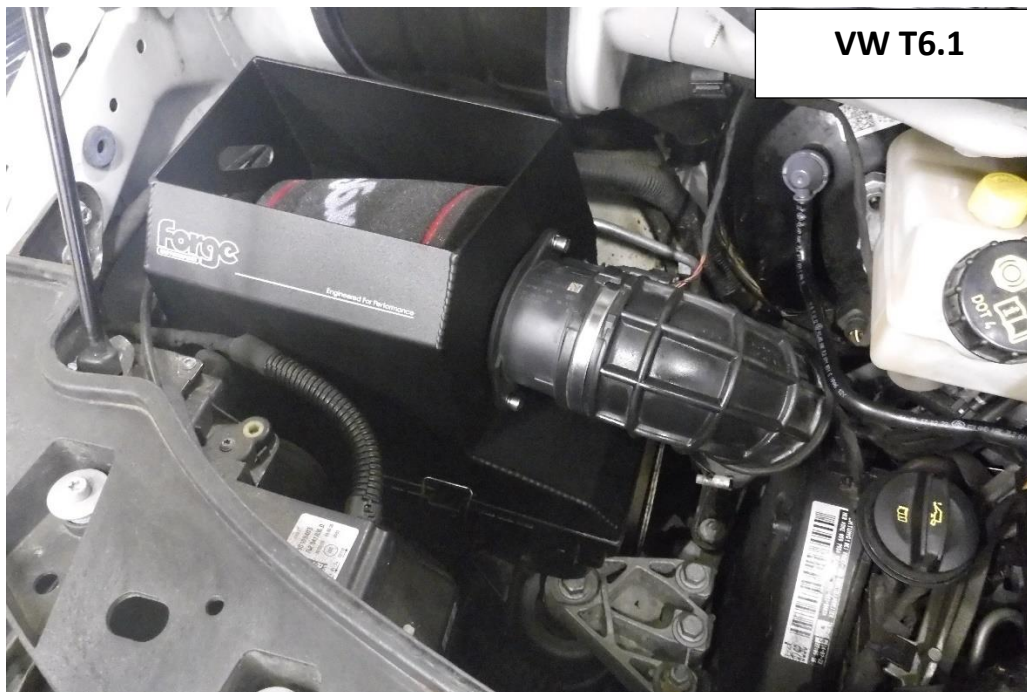
VW T5/T5.1/T6



VW T6.1



12. That is the installation of FMINDK48 complete, take your vehicle for a test drive and enjoy your new Forge Motorsport product.



Check out www.forgemotorsport.co.uk
and www.forgemotorsport.com
For a full range of performance products for your vehicle.

*If you have any questions or concerns about this product
or anything else, please feel free to contact your local or preferred
Forge Motorsport Dealer/Installer or you may contact us directly.*

Forge Motorsport UK (+44)1452 380999
Forge Motorsport USA (407)-447-5363
Forge Motorsport ASIA +886-4-22516887

info@forgemotorsport.co.uk
sales@forgemotorsport.com
sales@forgemotorsport.asia

