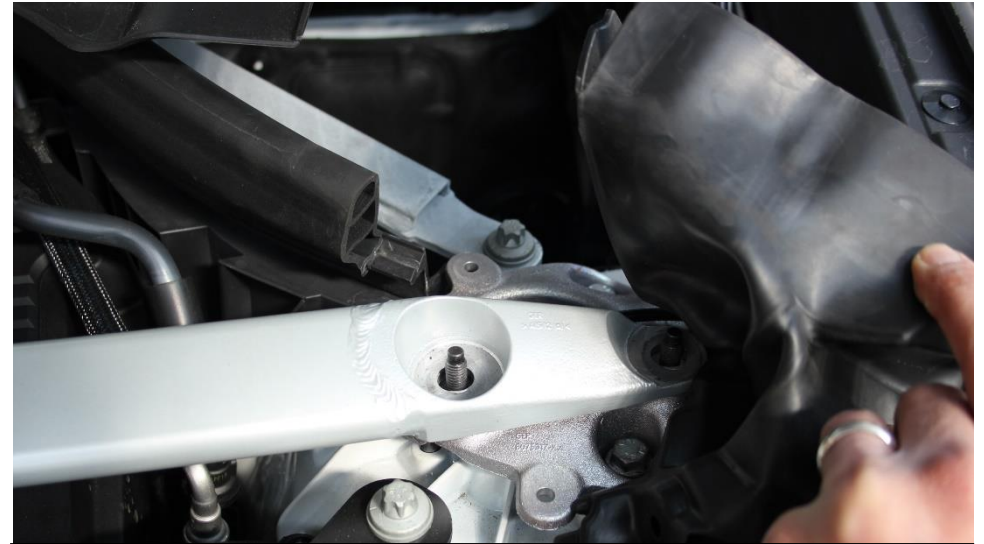


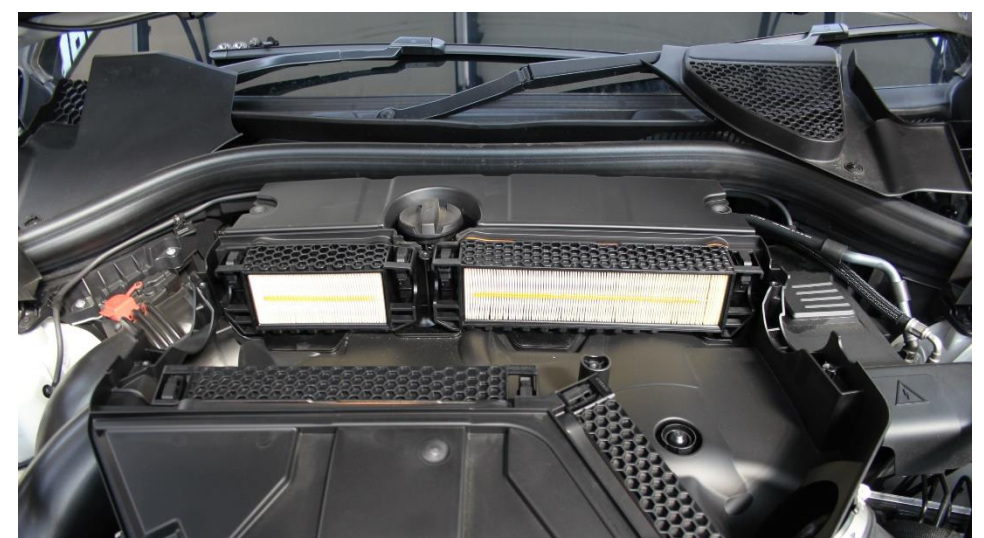
1. Start by removing the strut brace.



2. Underneath the rubber end covers on each side of the brace there are 2 nuts to remove.

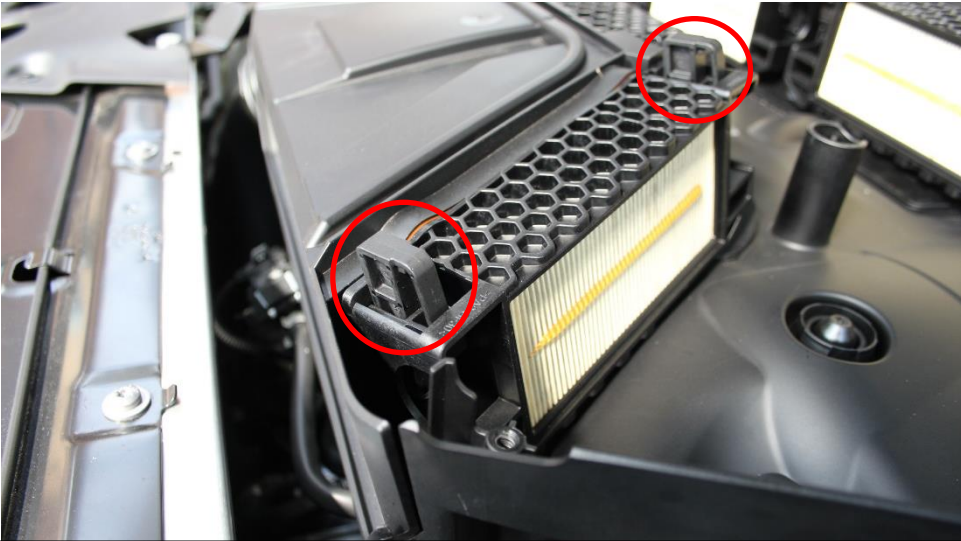


3. Remove the nuts on both sides and remove the brace.



4. Loosen the screws on top of the airbox lid and lift the lid off to expose the filters.





5. The filters are held in place with plastic frames which are secured with clips on each side. Lift up the clips by pressing them in the middle.



6. With the clips removed, the frames can be removed as well. Take out all the filters. If you also have grey charcoal filters behind the paper filters, you may also remove these.



7. Install the new filters into the airbox as shown.



8. Make sure they are fully seated into position.





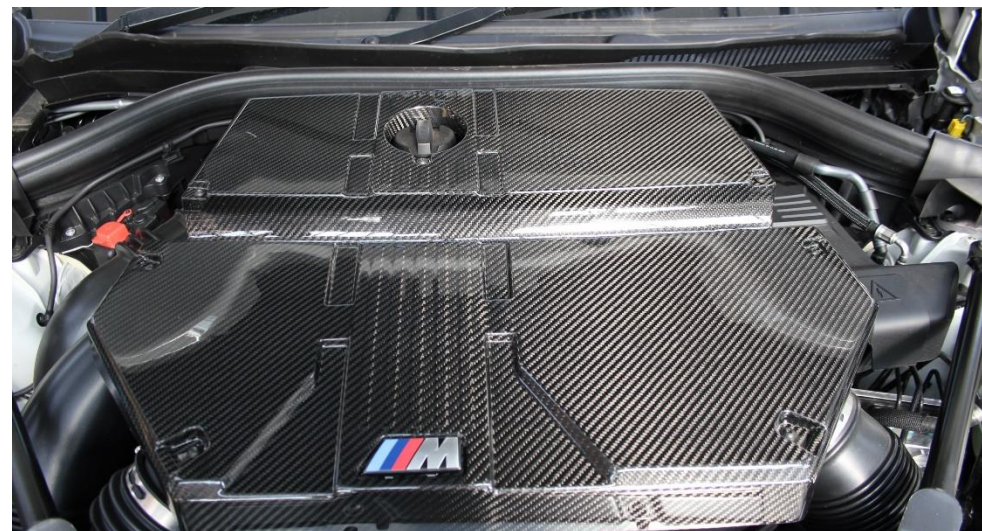
9. Now re-install the frame and secure with the clips.



10. Remove the M Badge from the cover – it is held in place with tabs on the reverse – these can be carefully bent back and the badge can be removed.



11. Install the badge onto the carbon cover.

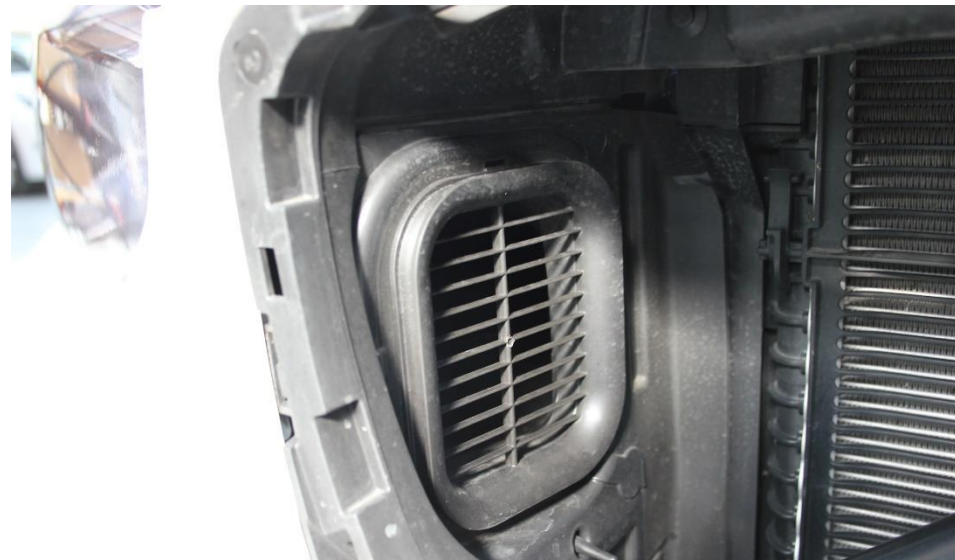


12. Use the supplied plastic washers with the OEM screws and install the lid. Re-install the Strut Brace.





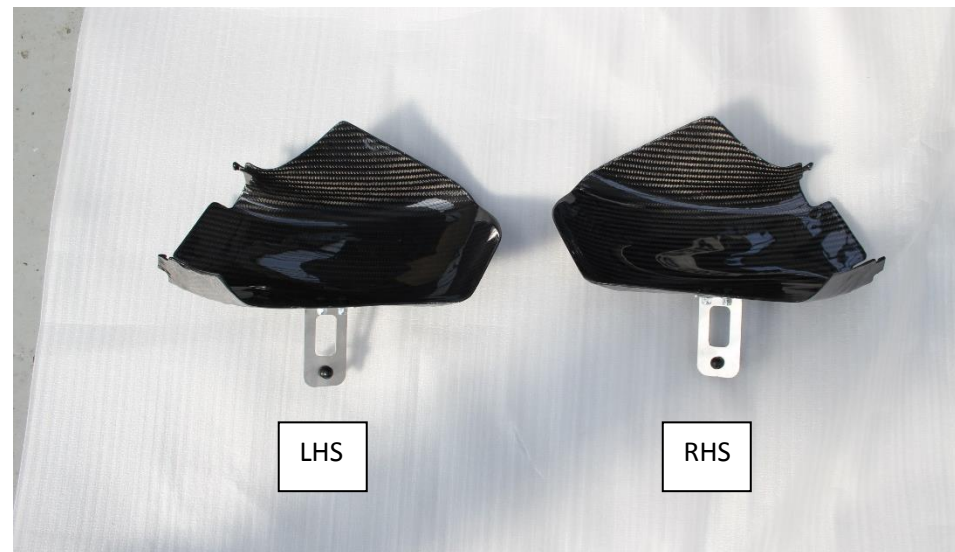
13. Remove the grills – push the tabs in on the top while pulling to release them.



14. Remove the grills covering the air entry ducts.



15. The grills are held in place with a tab on top and at the bottom. Carefully prise the clips out and remove the grills.



16. Identify the LHS and RHS Scoops



1. Arrange the Left and Right scoops as shown with the brackets which are also shown here as Left and Right.

**NON LCI – UPPER HOLES**

**LCI – LOWER HOLES**



2. Secure the brackets to the scoops as shown. Notice there are 2 sets of holes on each bracket. Please use the correct holes depending on if your car is an LCI or not. See next steps.



3. NON LCI – Secure the bracket to the scoop using the top holes as shown.



4. LCI – Secure the bracket to the scoop using the lower holes as shown.

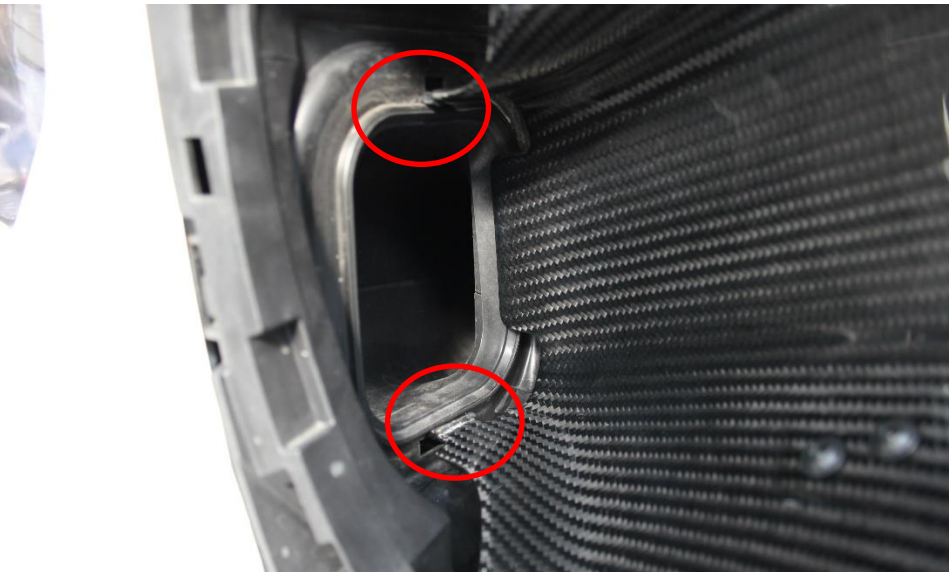




17. Place the LHS Scoops into the left opening – the clip on the bracket should go onto the strut brace – see next step.



18. Push the clip onto the strut brace.



19. The clips on the top and bottom of the scoop should go into the openings on the duct.



20. The inner duct panel may come loose as you push the clips in – pull the panel towards the scoop to ensure it secures with the scoop clips.



21. The end result should look like this. The inside duct panel should be secure with the scoop clips and the scoop should sit flush against the duct entry. Re install the front grills.

**You have now completed the installation of the Eventuri BMW X3M / X4M Intake.**

Please take all necessary precautions while installing this system. Eventuri cannot take responsibility for an incorrectly installed intake or any damage caused during installation.

