



## INSTALLATION GUIDE

CTS Turbo C7 Audi Heat Exchanger



20630 Mufford Crescent, Unit #309  
Langley, British Columbia V2Y 2V9

[www.CTSTURBO.com](http://www.CTSTURBO.com)

#### WHAT IS INCLUDED

1. CTS Turbo Heat Exchanger
2. Brackets
3. Installation hardware

#### NOTES

Vehicle used in this guide is a 2013 Audi S6. Always make sure the car is safe to work on. Do not work on a hot motor. We do not accept any liability for incorrect installation or damage during the install.

#### STEP 1

Remove the front bumper and crash bar.



#### STEP 2

Clamp off the two coolant hoses on the OEM heat exchanger.



STEP 3

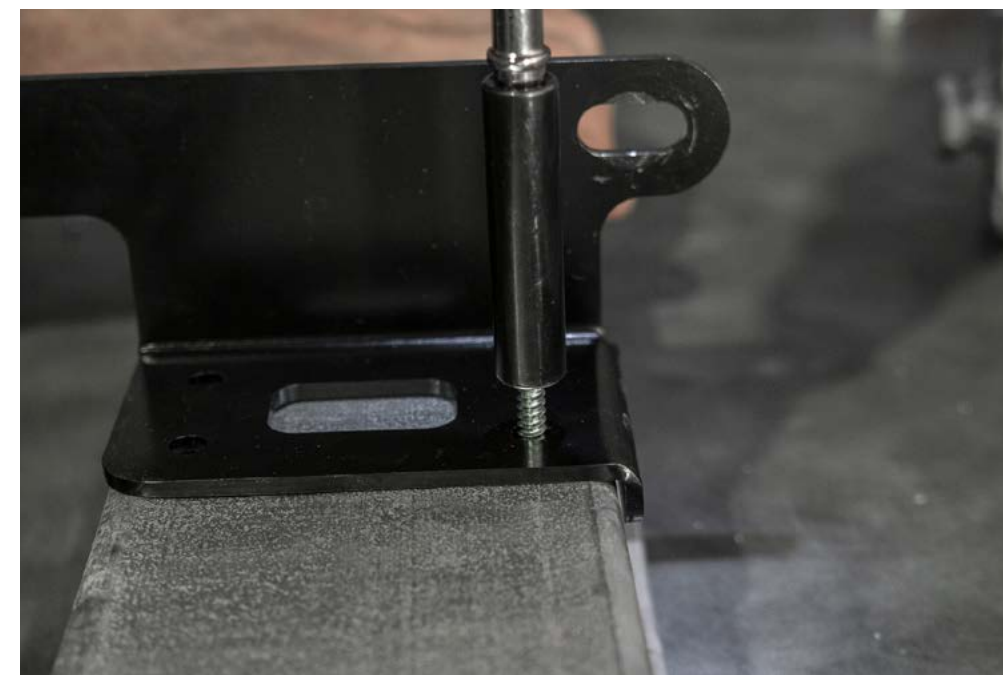
Temporarily install the provided brackets onto the CTS heat exchanger.



STEP 5

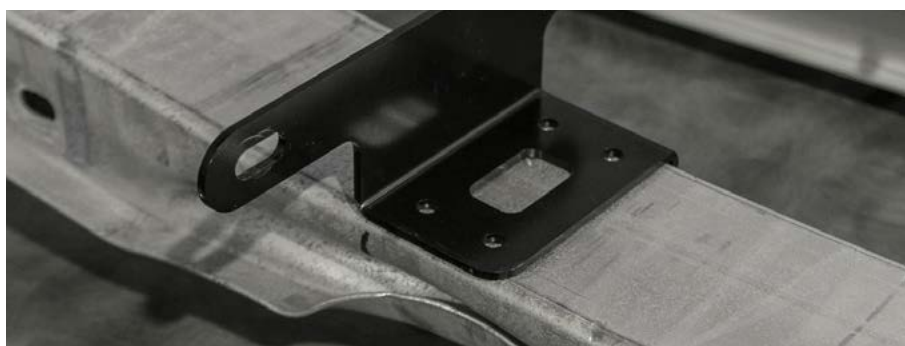
Using the self-tapping screws install one of the brackets.

Before mounting the second bracket, it's a wise idea to place the heat exchanger on the crash bar to double check your measurements.



STEP 4

We suggest loosely installing the crash bar on to the car and mounting the heat exchanger making sure it is seated centrally and mark the location with a sharpie.



**STEP 6**

Use supplied hardware to mount the heat exchanger to the crash bar.

**STEP 7**

Install the crash bar with the CTS heat exchanger.

**STEP 8**

1. Measure the length of hose needed and cut.
2. Install the hose mender.
3. Install on the CTS heat exchanger and connect to factory hose.

**STEP 9**

With the remainder of the provided hose connect to the outlet of the heat exchanger.



STEP 10

Run the hose behind the heat exchanger and connect to the factory hose.

Leave some slack as shown in the image.

Remove the hose clamps.



STEP 11

1.Re-fill the coolant system.

2.Install the drain plug.

3. Pressure test to ensure there are no leaks.



STEP 12

Reinstall the bumper and all necessary accessories.

You are done!

