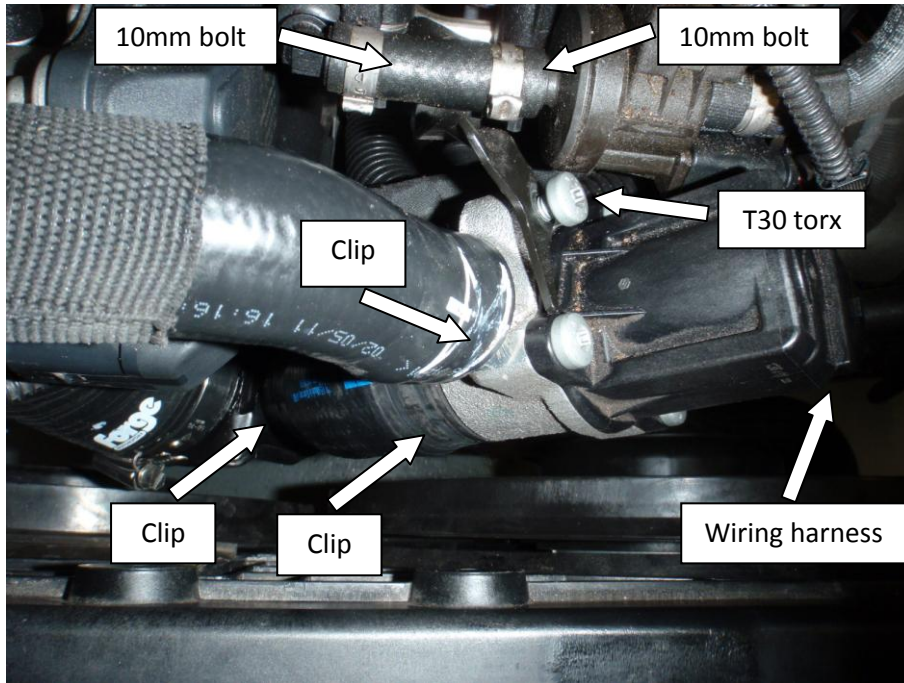
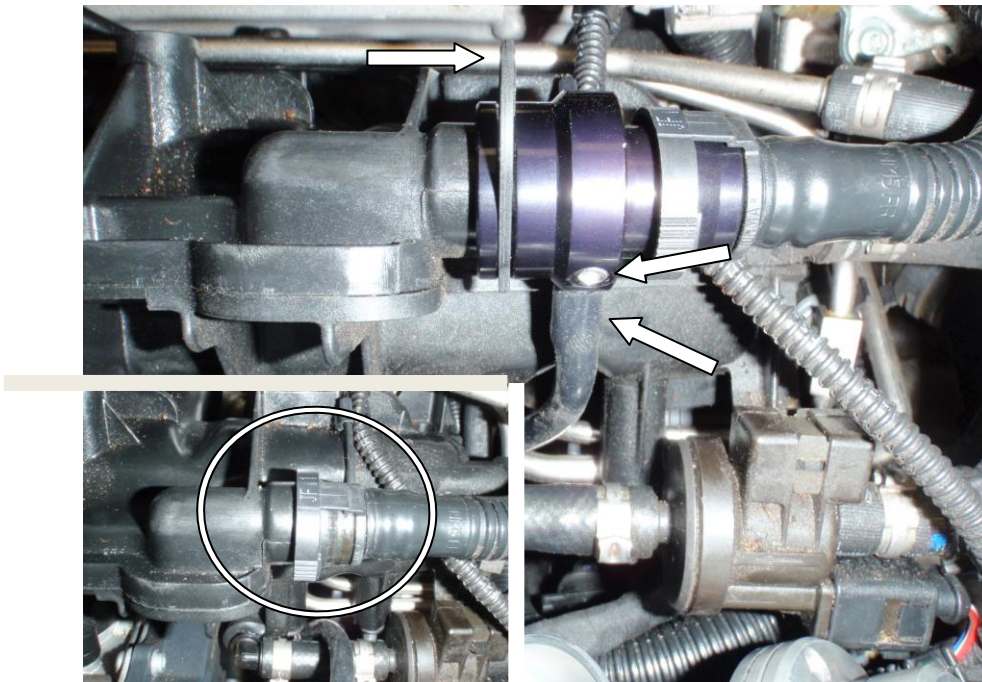


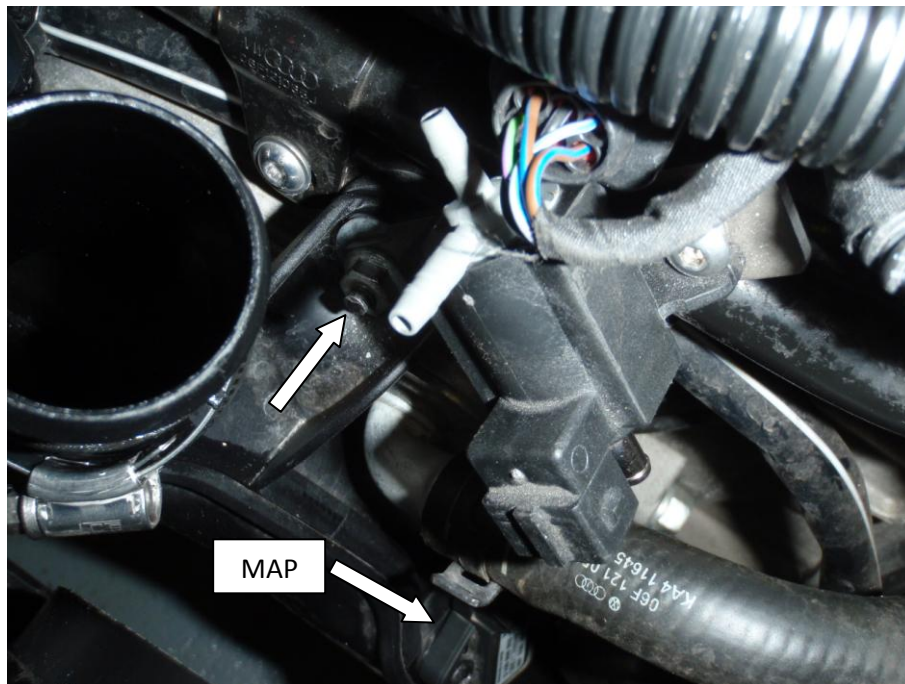
1. Undo the T30 torx holding the bracket to the stock dump valve, unclip the rubber hoses and unclip the wiring harness. Remove the stock valve and metal casting then undo the two 10mm nuts holding the bracket to the inlet manifold and remove bracket. These are behind the rubber hose shown in the photo below.



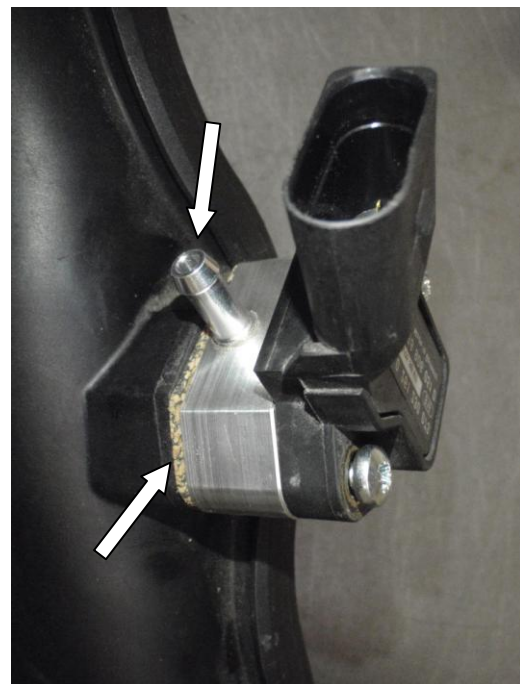
2. Unclip the breather and install the PCV take off, the take off should have two of the holes blocked off with grub screws unless you wish to fit a boost gauge etc. The other hole needs a vacuum take off with the largest hole screwed in. Secure the PCV take off with the small plastic clip supplied in the kit.



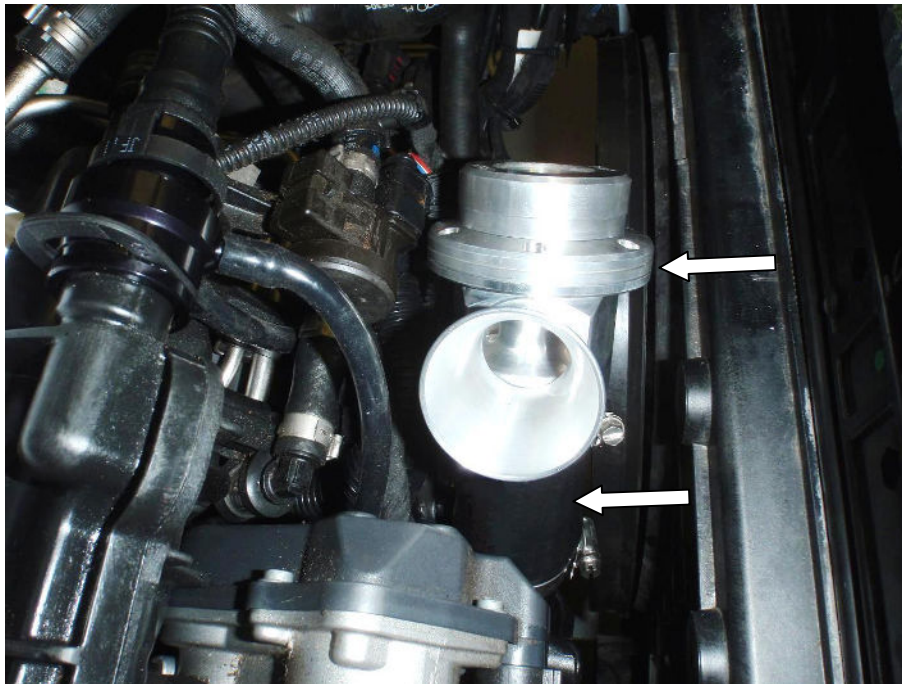
- Using the bracket on the plastic boost pipe undo the nut and install the solenoid/bracket to this as shown below.



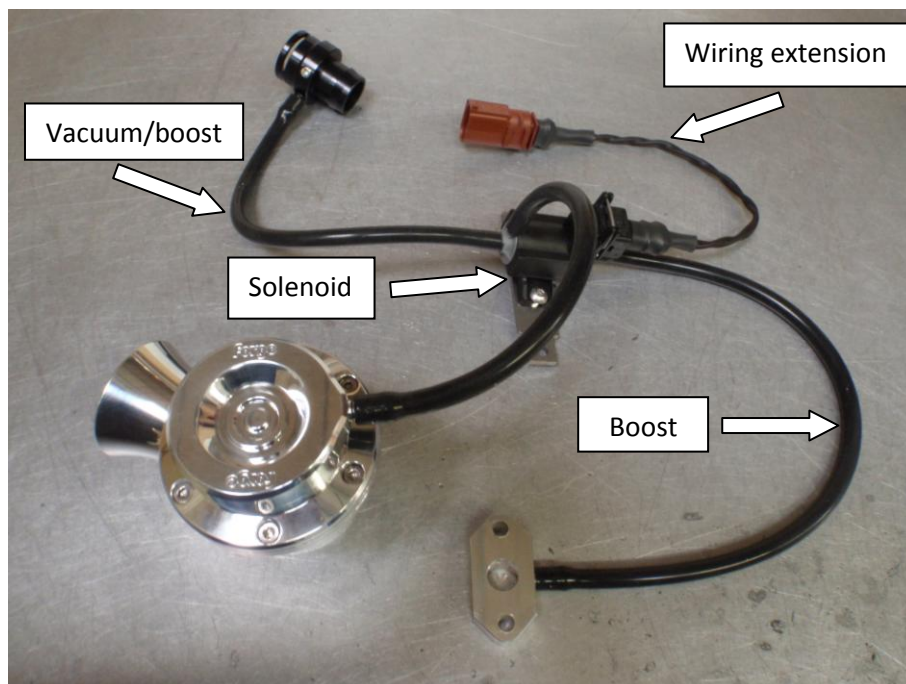
- Remove the MAP sensor and install the boost take off block using the long screws supplied. Please note the cork gasket is between the pipe and the block, the boost take off is also closest to the plastic pipe as shown below.



5. Install the silicon hose and BOV with the clips supplied in kit.



6. The photo below shows how to install the vacuum hoses and wiring extension. When installing in the car, the vacuum hoses and wiring extension can be routed under the inlet manifold for a neat installation.



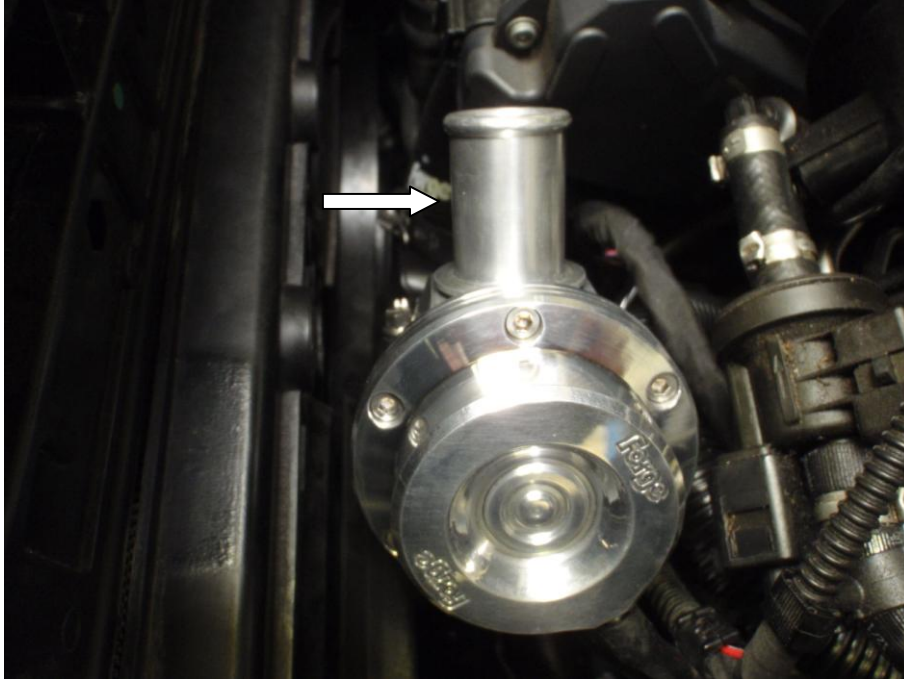
7. Please note the position of the wiring extension and direction of the vacuum take off on the BOV.



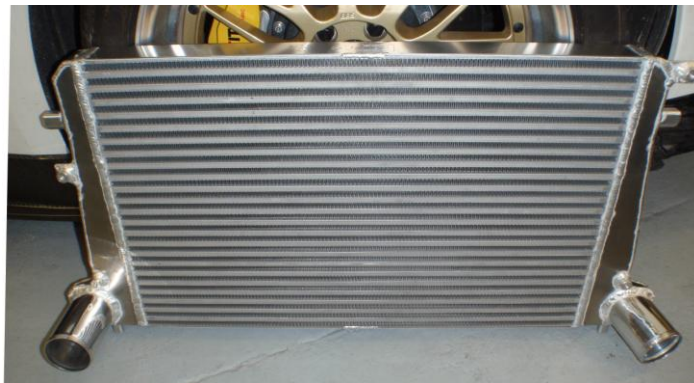
8. For venting to atmosphere at the back of the engine bay install the silicon hose, bung and clips supplied in the kit onto the filter pipe.



9. Forge motorsport highly recommend venting to atmosphere as this valve has a bigger bore for releasing the boost pressure. However you can install this valve recirculating if you wish. Screw in the small tube supplied in the kit and reattach the stock hose. Follow step one in reverse order and your installation is now complete.



You may also be interested in these other Forge products for the Audi S3, available from your nearest Forge dealer:



Intercooler (adds horse power and torque)
Silicon hoses (longer life and durability)
Braded brake lines (improves efficiency and strength)



ENGINEERED FOR PERFORMANCE

